



**Carey Creek Boat Ramp**

This popular take-out for the Main Salmon features a boat ramp, picnic tables, and toilets. Before the French Creek Bridge was completed in 1892, wagon traffic traveling between mines and supply points crossed here on a ferry operated by Englishmen Jim and John Carey.

Wind River Bridge

**Carey Falls or 'Gold Hole' II+**

This rapid has a popular hole for kayakers. It becomes difficult for power boaters at low flows.

**Wind River Pack Bridge and Trailhead**

The first modern bridge the Forest Service constructed here collapsed into the river as it neared completion. Workers recovered half of the bridge and used it to construct the bridge you see today. It was opened in the spring of 1962. The Wind River Trail begins here and accesses the Gospel - Hump Wilderness.

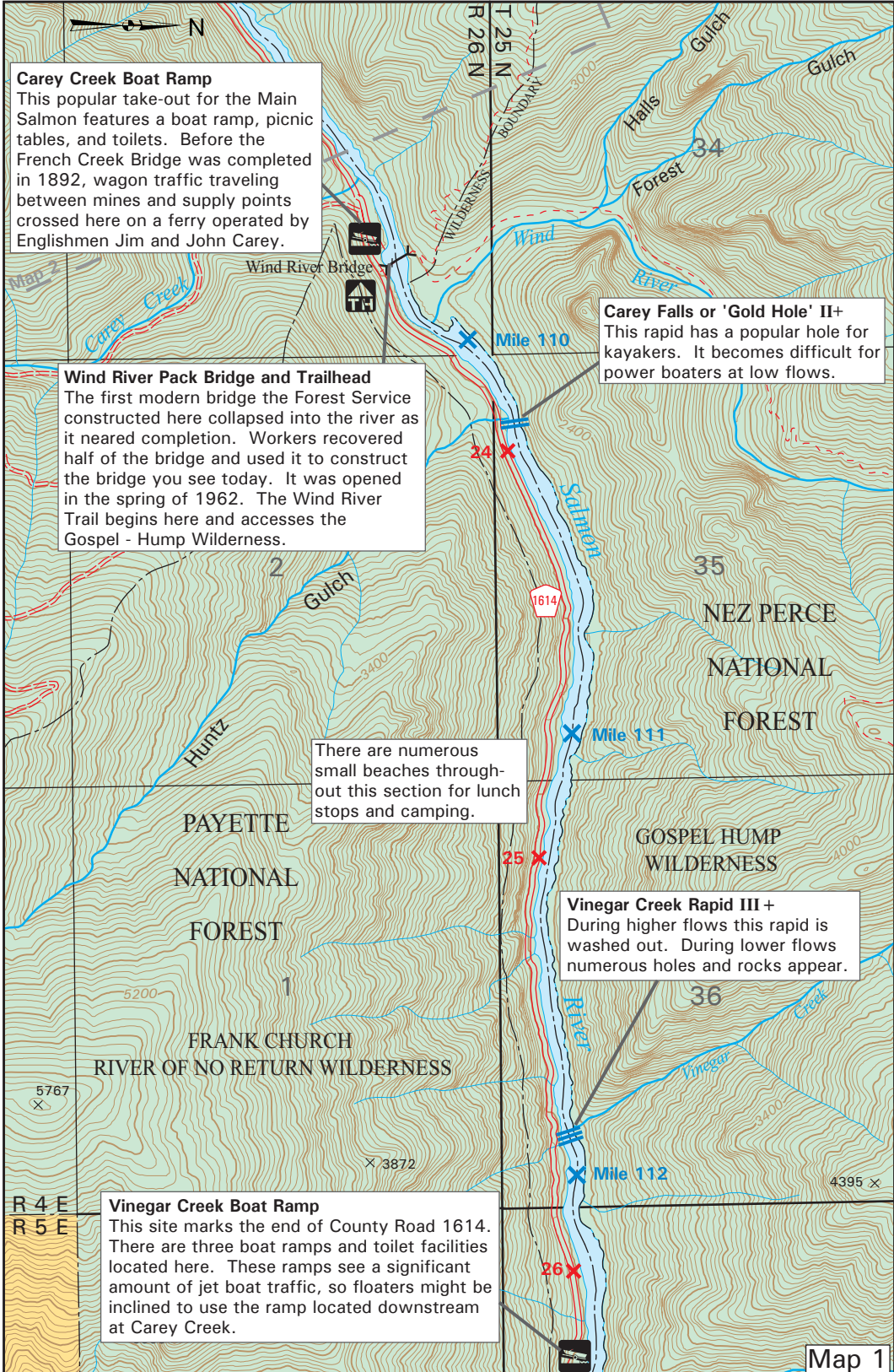
There are numerous small beaches throughout this section for lunch stops and camping.

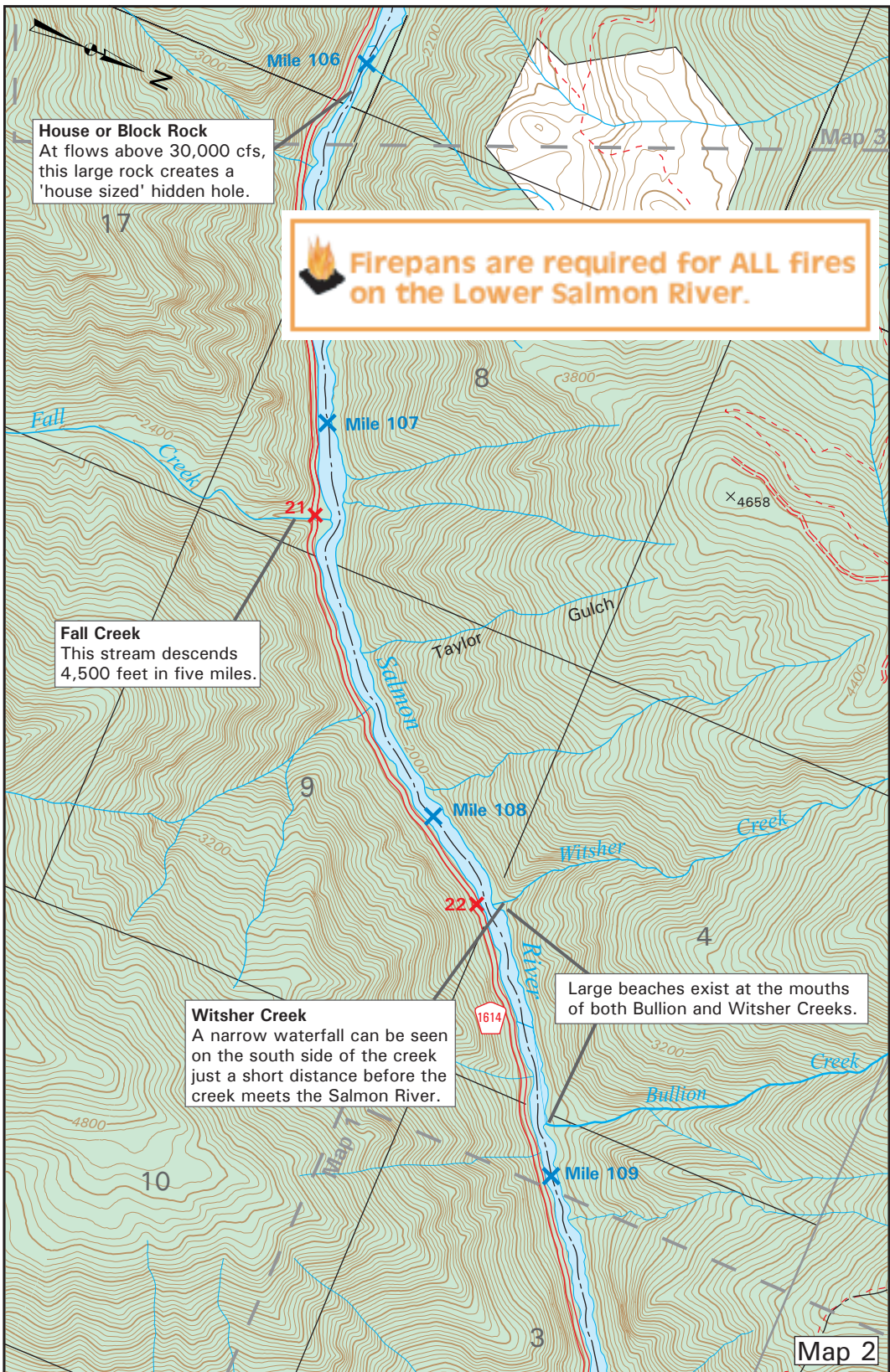
**Vinegar Creek Rapid III +**

During higher flows this rapid is washed out. During lower flows numerous holes and rocks appear.

**Vinegar Creek Boat Ramp**

This site marks the end of County Road 1614. There are three boat ramps and toilet facilities located here. These ramps see a significant amount of jet boat traffic, so floaters might be inclined to use the ramp located downstream at Carey Creek.





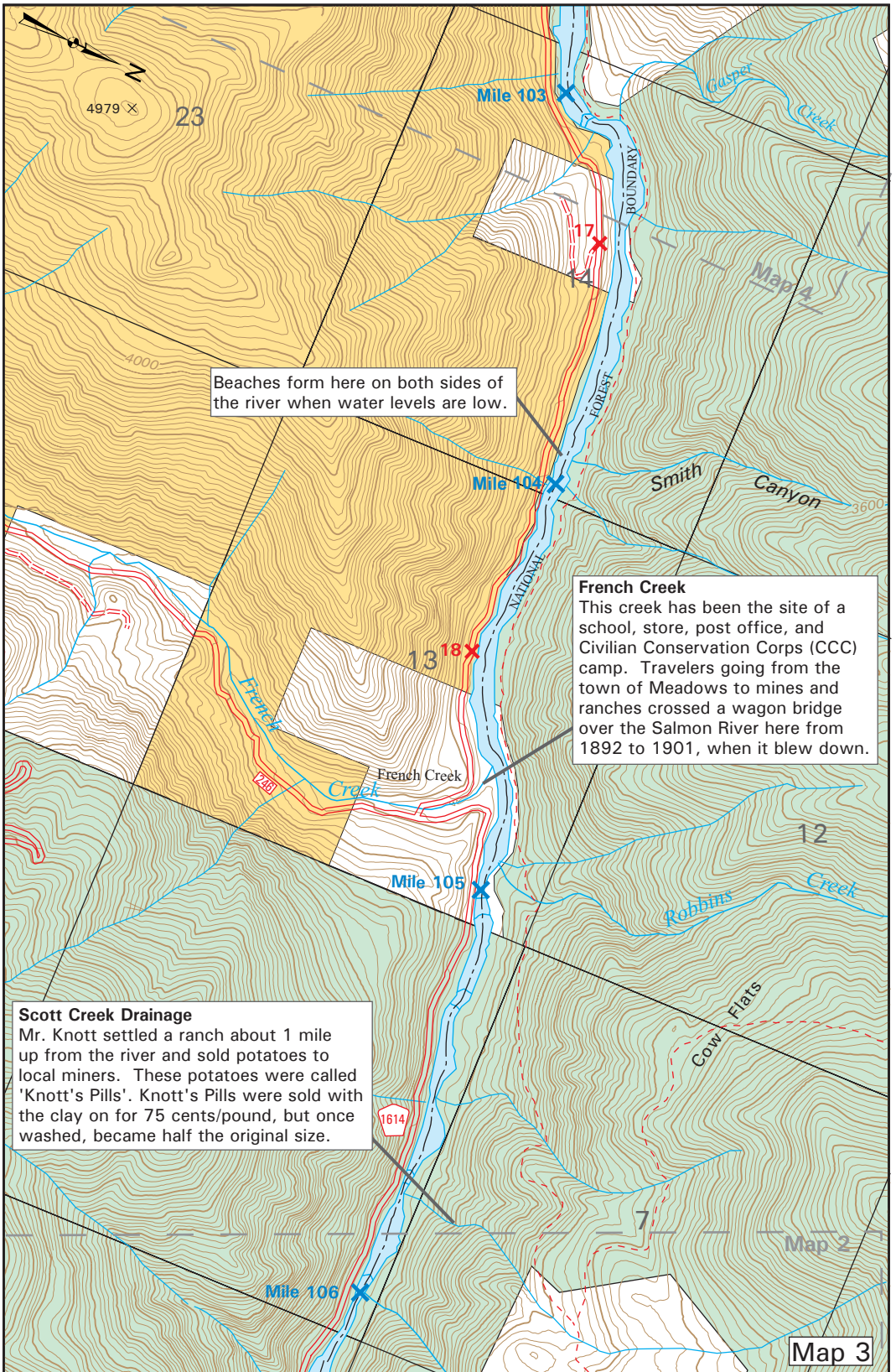
**House or Block Rock**  
At flows above 30,000 cfs, this large rock creates a 'house sized' hidden hole.

 **Firepans are required for ALL fires on the Lower Salmon River.**

**Fall Creek**  
This stream descends 4,500 feet in five miles.

**Witsher Creek**  
A narrow waterfall can be seen on the south side of the creek just a short distance before the creek meets the Salmon River.

Large beaches exist at the mouths of both Bullion and Witsher Creeks.



4979 X 23

Mile 103 X

Beaches form here on both sides of the river when water levels are low.

Mile 104 X

**French Creek**  
This creek has been the site of a school, store, post office, and Civilian Conservation Corps (CCC) camp. Travelers going from the town of Meadows to mines and ranches crossed a wagon bridge over the Salmon River here from 1892 to 1901, when it blew down.

13 18 X

Mile 105 X

**Scott Creek Drainage**  
Mr. Knott settled a ranch about 1 mile up from the river and sold potatoes to local miners. These potatoes were called 'Knott's Pills'. Knott's Pills were sold with the clay on for 75 cents/pound, but once washed, became half the original size.

1614

Mile 106 X

Map 3

**The Crevice**

The area below the Manning Bridge is known as "The Crevice." This was once the proposed site for an Army Corps of Engineers dam project. If built, the dam would have backed up water 200 feet over Shepp Ranch, located 24.3 miles upstream.

Manning Bridge

Mile 100

**Manning Bridge**

The Manning Bridge was constructed by the Civilian Conservation Corps (CCC). The bridge was named for a worker who fell from a bluff above the bridge on a nighttime return trip from Riggins.

Driving on beaches is not permitted.



**Elkhorn Creek**

George Shearer helped his parents run a ferry here in 1865. He was also an Idaho State legislator, traveling the distance between the ferry and Boise on snowshoes - a distance of 300 miles.

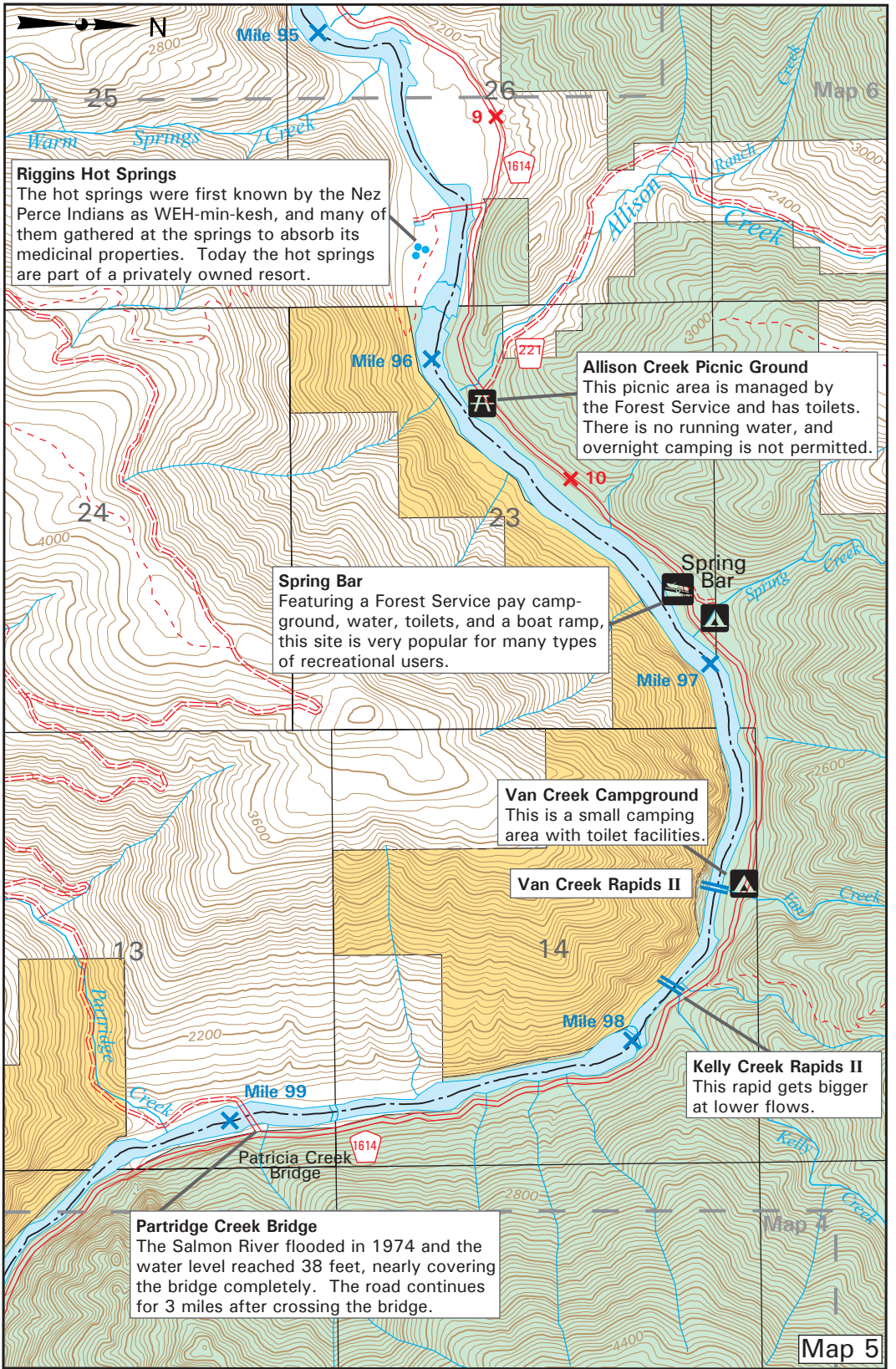
Mile 101

NEZ PERCE NATIONAL FOREST

**Elkhorn Beaches**

Two large beaches and two small beaches are located here. This site has toilet facilities and is a popular location for day users and car campers.

Mile 102



**Riggins Hot Springs**

The hot springs were first known by the Nez Perce Indians as WEH-min-kesh, and many of them gathered at the springs to absorb its medicinal properties. Today the hot springs are part of a privately owned resort.

**Allison Creek Picnic Ground**

This picnic area is managed by the Forest Service and has toilets. There is no running water, and overnight camping is not permitted.

**Spring Bar**

Featuring a Forest Service pay campground, water, toilets, and a boat ramp, this site is very popular for many types of recreational users.

**Van Creek Campground**

This is a small camping area with toilet facilities.

**Van Creek Rapids II**

**Kelly Creek Rapids II**

This rapid gets bigger at lower flows.

**Partridge Creek Bridge**

The Salmon River flooded in 1974 and the water level reached 38 feet, nearly covering the bridge completely. The road continues for 3 miles after crossing the bridge.



**End of Access Road**  
Public access along this road is not permitted beyond this point.

**Cat's Paw II**  
This short wave train is a popular location for kayakers at lower flows.

**Public Access**  
This public road provides access to Lake Creek trail system.

**Access Road**  
This narrow dirt road can be used to access the river until the point where it reaches private land across from Hippie Beach.

**Lake Creek Bridge**

**Lake Creek Rapids III-IV**  
This rapid is easily recognized by the large yellow bridge over the river just below the rapid. There is a large rock on the top left side of the rapid. At flows above 60,000 cfs this rock creates a large wave called the "Big Easy" or "Haystack." At flows below 20,000 cfs, the wave disappears and a large hole forms.

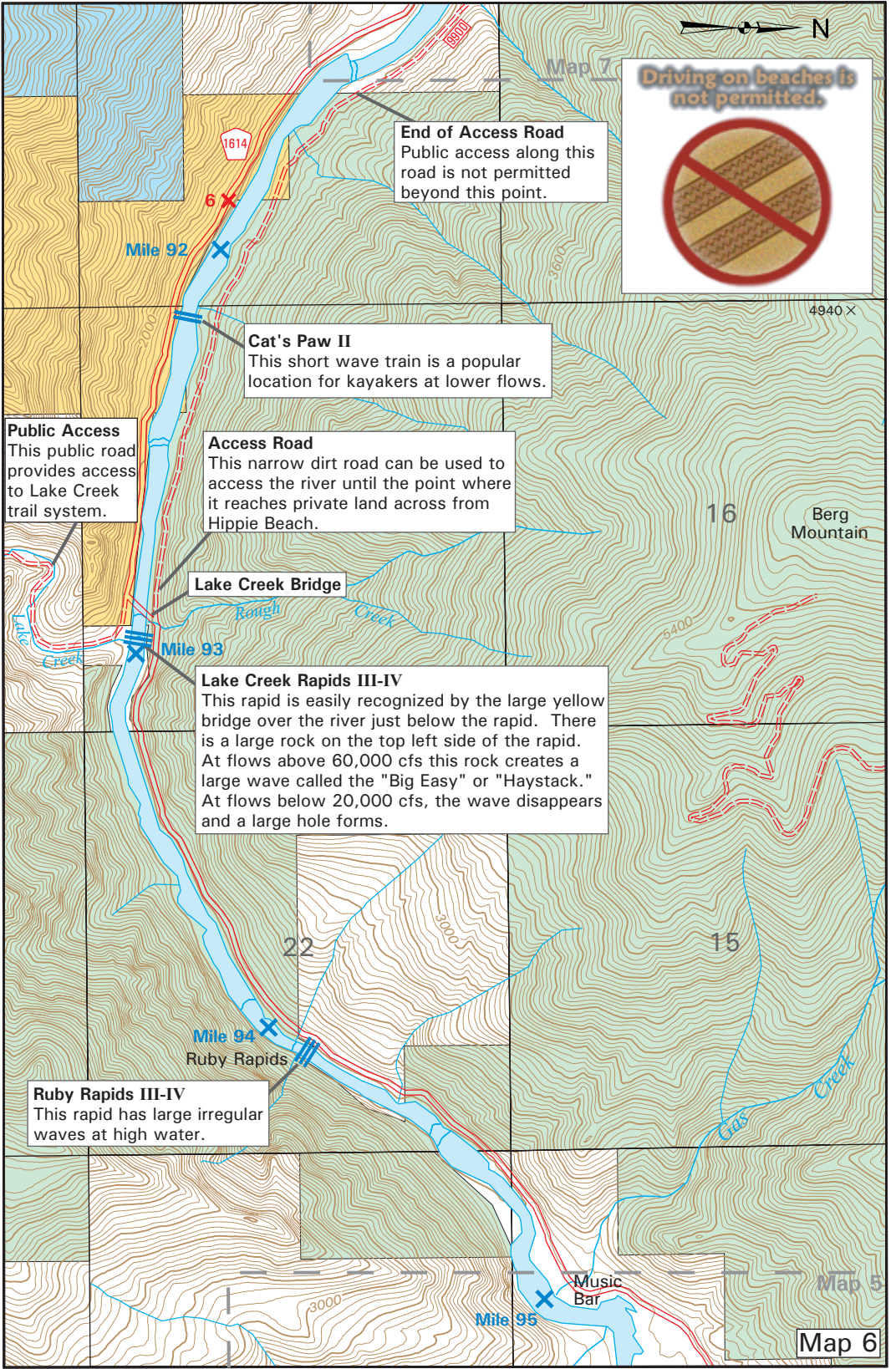
**Mile 94**  
Ruby Rapids

**Ruby Rapids III-IV**  
This rapid has large irregular waves at high water.

Music Bar

**Mile 95**

Map 6



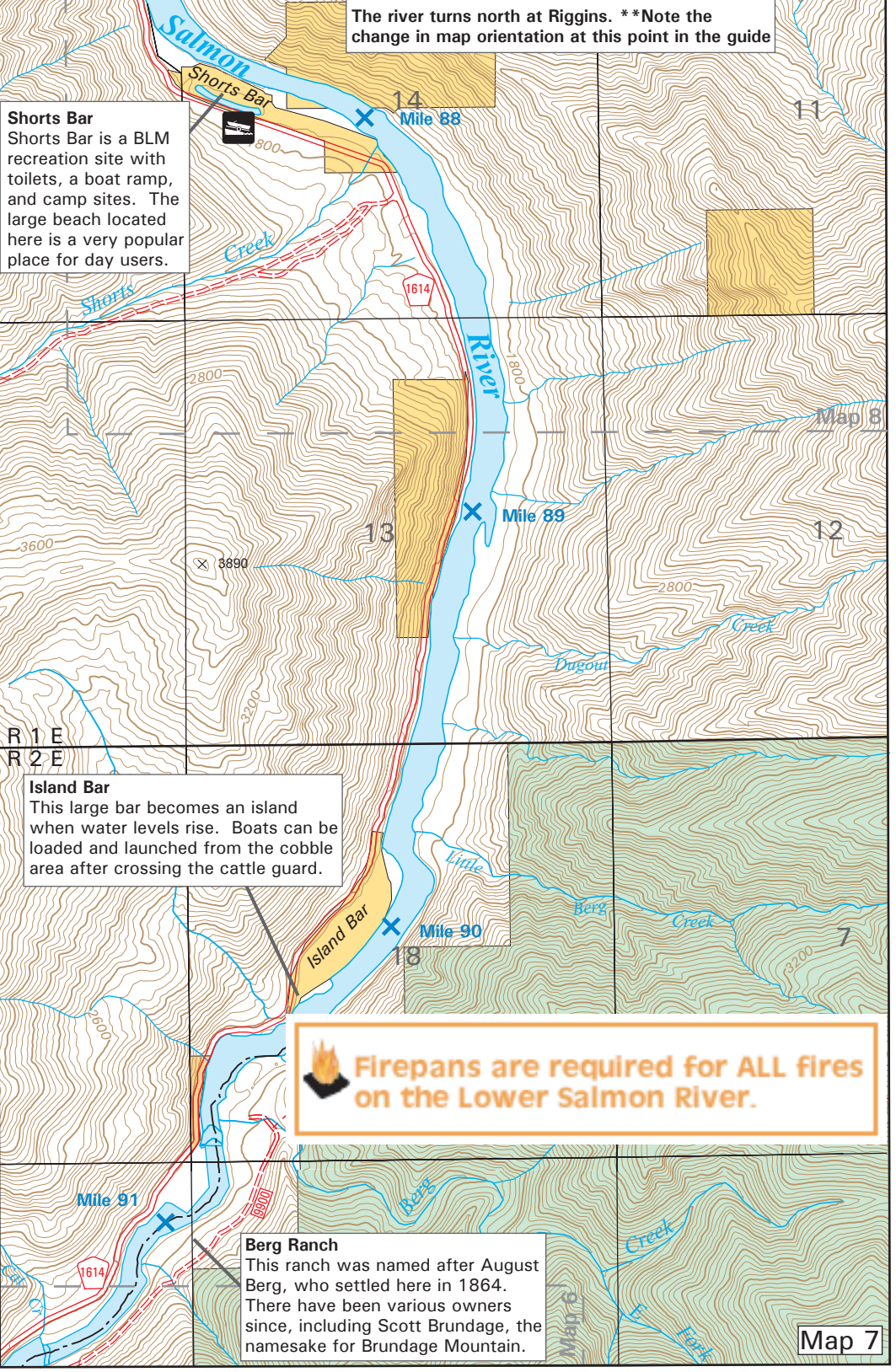
The river turns north at Riggins. \*\*Note the change in map orientation at this point in the guide

**Shorts Bar**  
Shorts Bar is a BLM recreation site with toilets, a boat ramp, and camp sites. The large beach located here is a very popular place for day users.

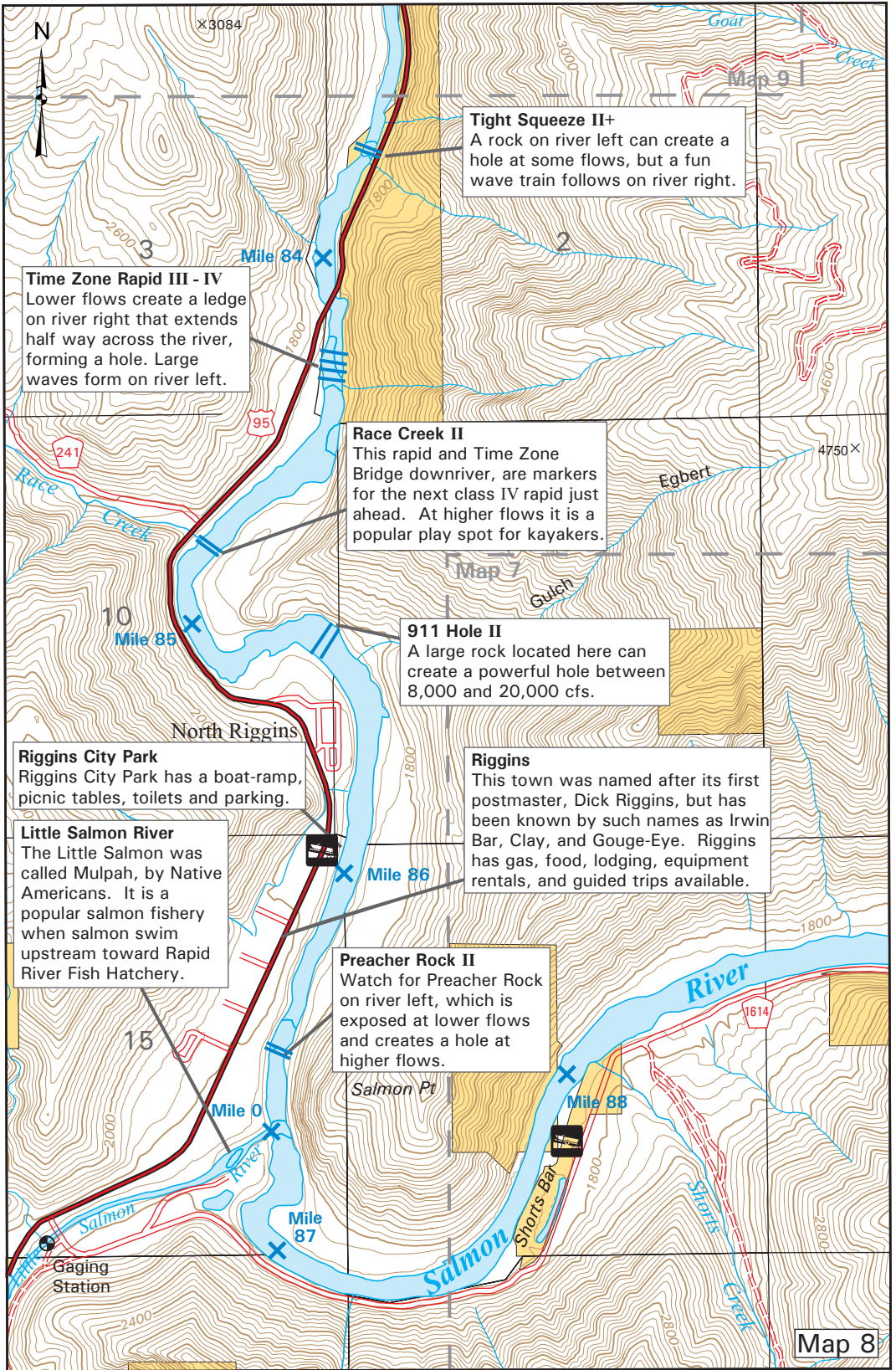
**Island Bar**  
This large bar becomes an island when water levels rise. Boats can be loaded and launched from the cobble area after crossing the cattle guard.

**Berg Ranch**  
This ranch was named after August Berg, who settled here in 1864. There have been various owners since, including Scott Brundage, the namesake for Brundage Mountain.

 **Firepans are required for ALL fires on the Lower Salmon River.**







**Time Zone Rapid III - IV**  
Lower flows create a ledge on river right that extends half way across the river, forming a hole. Large waves form on river left.

**Tight Squeeze II+**  
A rock on river left can create a hole at some flows, but a fun wave train follows on river right.

**Race Creek II**  
This rapid and Time Zone Bridge downriver, are markers for the next class IV rapid just ahead. At higher flows it is a popular play spot for kayakers.

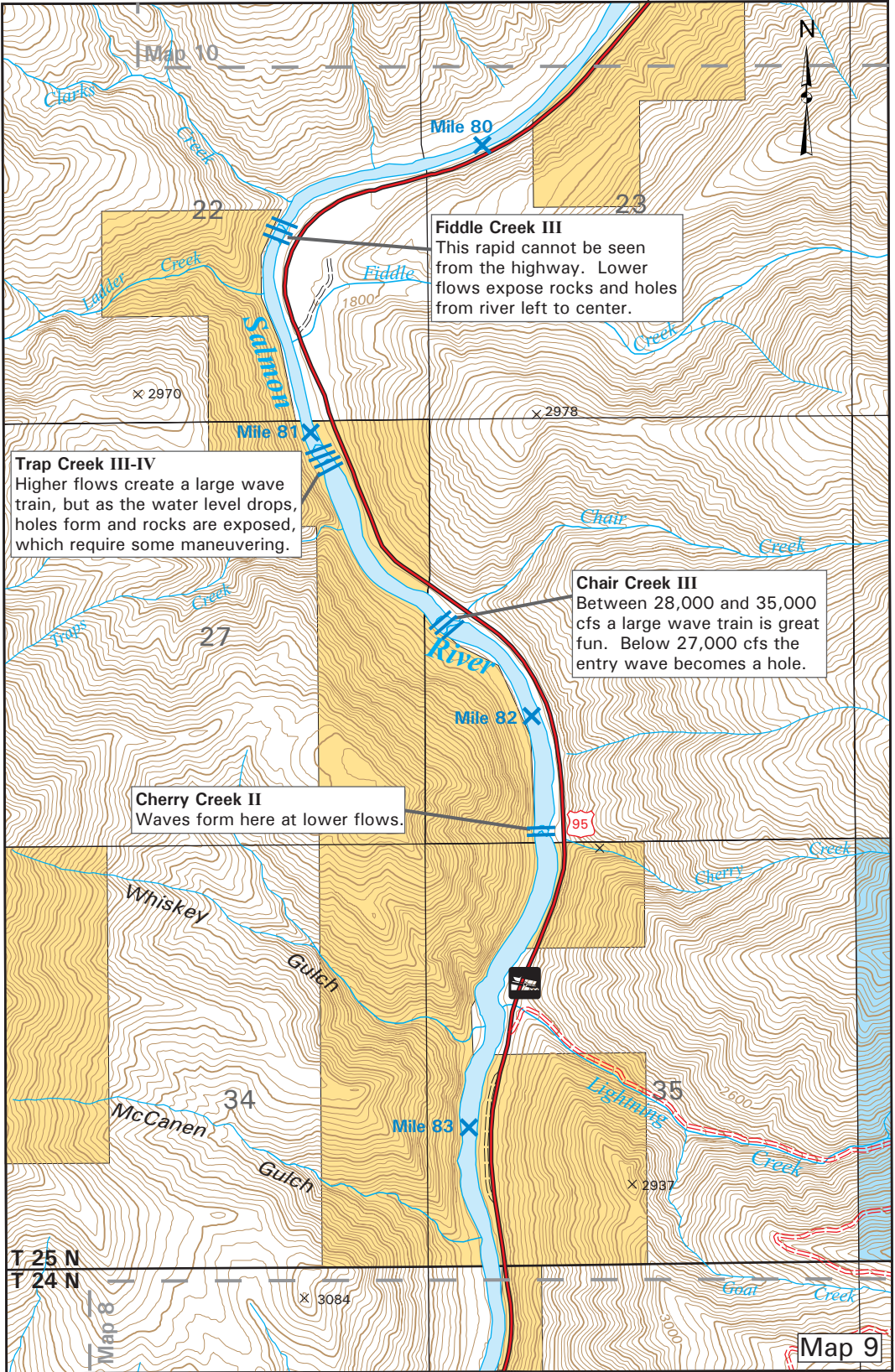
**911 Hole II**  
A large rock located here can create a powerful hole between 8,000 and 20,000 cfs.

**Riggins City Park**  
Riggins City Park has a boat-ramp, picnic tables, toilets and parking.

**Little Salmon River**  
The Little Salmon was called Mulpah, by Native Americans. It is a popular salmon fishery when salmon swim upstream toward Rapid River Fish Hatchery.

**Riggins**  
This town was named after its first postmaster, Dick Riggins, but has been known by such names as Irwin Bar, Clay, and Gouge-Eye. Riggins has gas, food, lodging, equipment rentals, and guided trips available.

**Preacher Rock II**  
Watch for Preacher Rock on river left, which is exposed at lower flows and creates a hole at higher flows.



Map 10

Mile 80

**Fiddle Creek III**  
This rapid cannot be seen from the highway. Lower flows expose rocks and holes from river left to center.

**Trap Creek III-IV**  
Higher flows create a large wave train, but as the water level drops, holes form and rocks are exposed, which require some maneuvering.

**Chair Creek III**  
Between 28,000 and 35,000 cfs a large wave train is great fun. Below 27,000 cfs the entry wave becomes a hole.

**Cherry Creek II**  
Waves form here at lower flows.

T 25 N  
T 24 N

Map 9

T 26 N  
F 25 N



× 2260

Mile 76

Lucile

Mile 77

Sheep Gulch

Creek

Creek

Elyers

**Lucile Bar**  
This is a popular take-out location for floatboaters and can get congested, especially in the afternoon. It has a boat ramp, toilets, and picnic facilities.

Lucile Bar

Mile 78

95

10

3370

× 3849  
Lucile

**Black Rock Rapid III**  
Lower flows create a hole on river right.

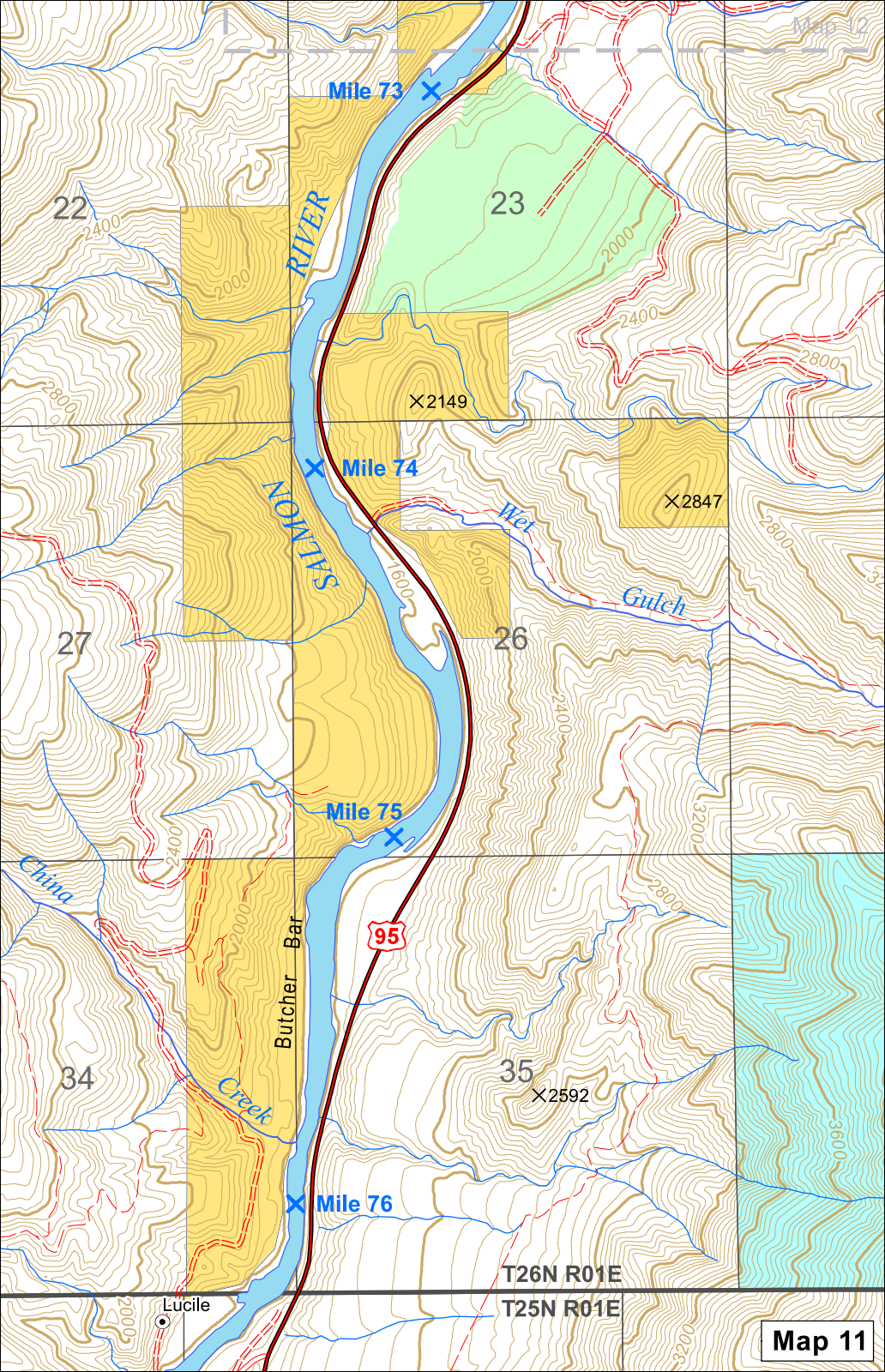
Squaw Bar

Mile 79

**Rodeo Hole and Jackass Flat**  
Rodeo Hole is a popular play spot for kayakers at higher flows. Some raft groups choose to take-out at Jackass Flat.

× 3026

14



Mile 73

23

Mile 74

X2149

X2847

26

Mile 75

95

35

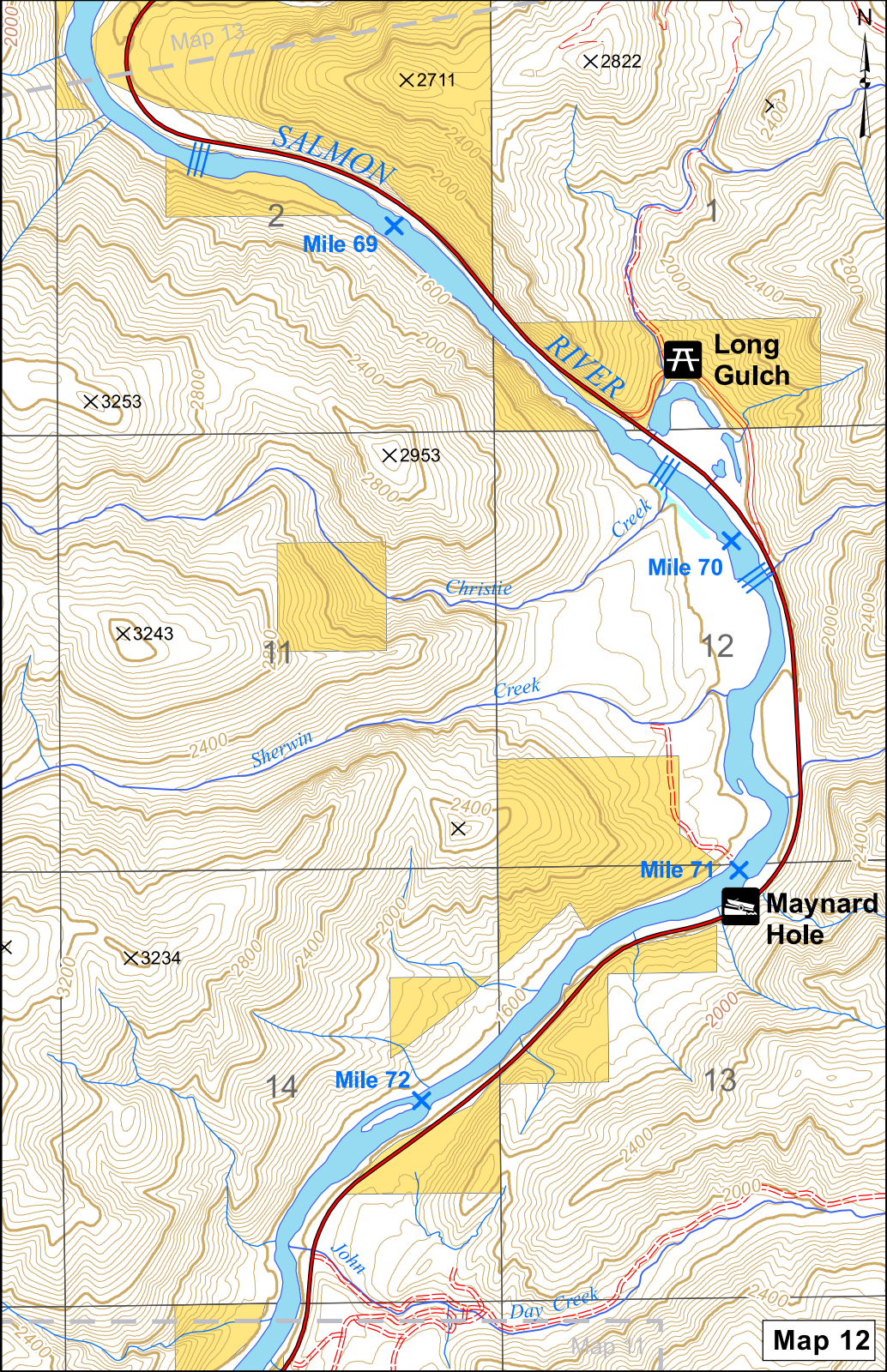
X2592

Mile 76

T26N R01E

T25N R01E

Lucile



Map 11

X2711

X2822

X2800

2

Mile 69

Long Gulch

X3253

X2953

Mile 70

12

X3243

11

X3234

Mile 71

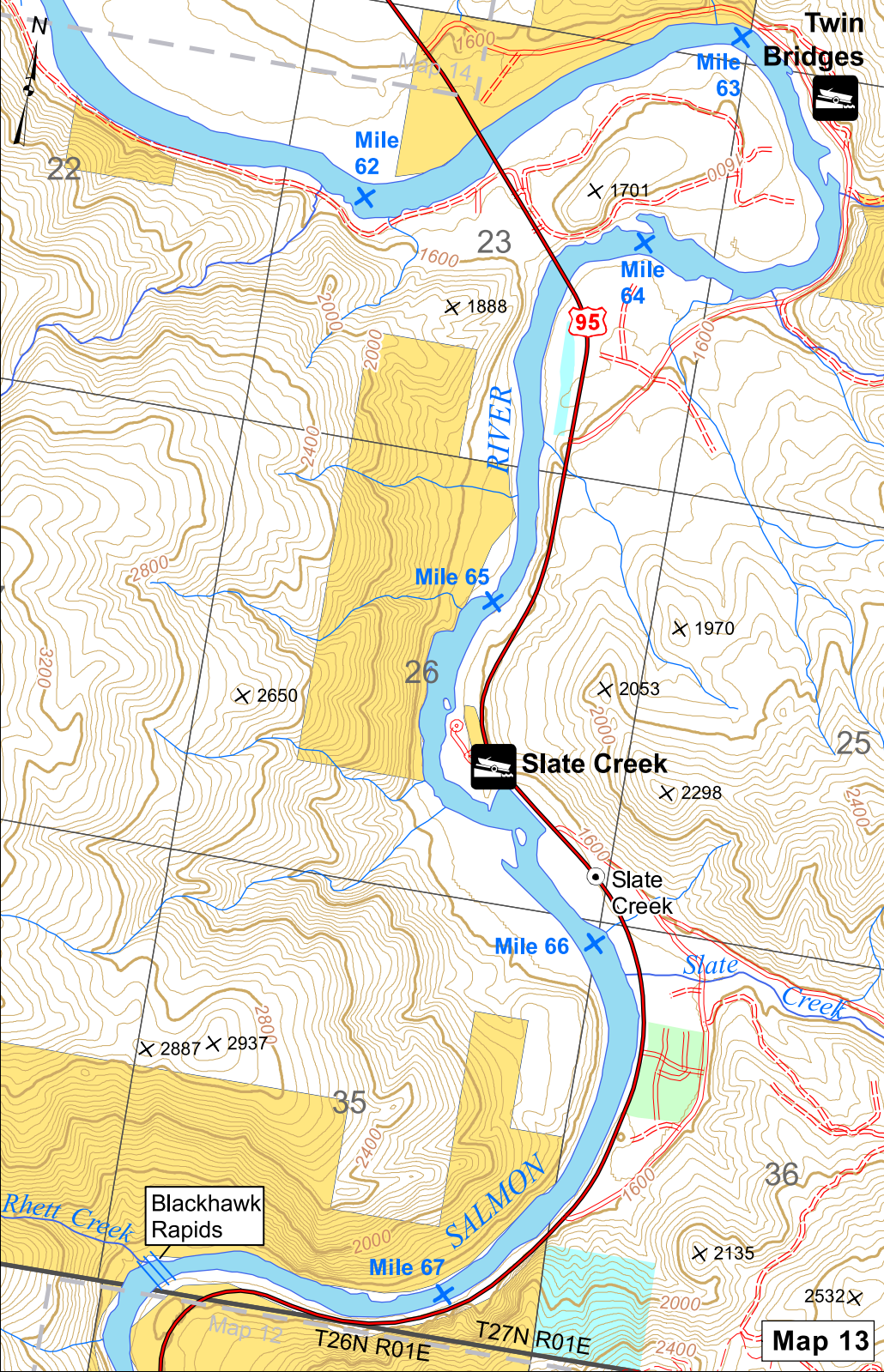
Maynard Hole

14

Mile 72

13

Map 12



Twin Bridges



Mile 63

Mile 62

Mile 64

Mile 65

Mile 66

Mile 67

Slate Creek

Slate Creek

Slate Creek

Blackhawk Rapids

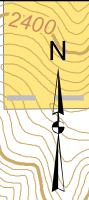
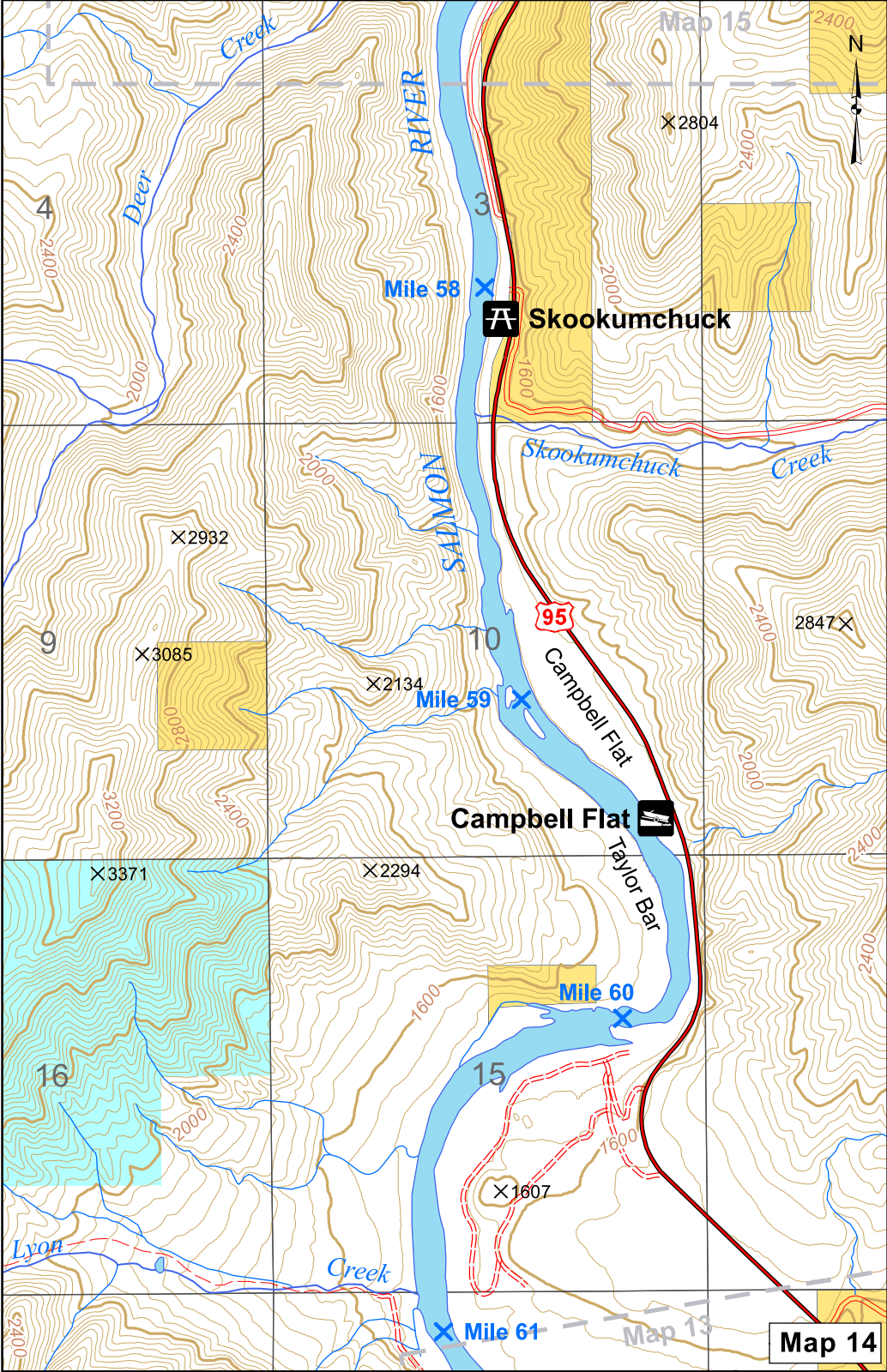
SALMON RIVER

Map 12

Map 13

T26N R01E

T27N R01E



Map 15

X2804

Mile 58



Skookumchuck

X2932

X3085

X2134

2847X

95

Mile 59

Campbell Flat



X3371

X2294

Mile 60

X1607

Mile 61

Map 13

Map 14

