



Alcoa Power Generating Inc.
Tapoco Division
PO Box 576
Badin, North Carolina 28009-0576
Tel: 1-888-886-1063
Fax: 1-704-422-5776
www.alcoa.com/tapoco

March 7, 2008

Kimberly D. Bose, Secretary
Federal Energy Regulatory Commission
888 First Street NE
Washington, D.C. 20426

RE: Tapoco Hydroelectric Project (FERC No. 2169) - License Compliance
License Article 406 and Gravel Enhancement Plan

Dear Secretary Bose:

By order dated August 11, 2006, the Federal Energy Regulatory Commission (FERC) approved the Cheoah River Bypassed Reach Gravel Enhancement Plan (Plan) filed by Alcoa Power Generating Inc. (APGI) on August 31, 2005, in accordance with License Article 406.

Section 3.1 of the Plan requires that no less than a total of 100 cubic yards (CY) of gravel be introduced at four different locations in and along the Cheoah River within three years of the effective date of the Tapoco Project FERC license, or by March 1, 2008.

During the week of February 18, 2008, APGI and the Resource Agencies (US Fish and Wildlife Service, US Forest Service, NC Department of Environment and Natural Resources, and NC Wildlife Resources Commission) placed 101.11 yards (161.77 tons) of natural river stone (i.e., clean, natural stone with an average diameter or d50 of 40 mm) into the Cheoah River at four sites (see table below and attached map). The gravel was placed in the river channel, at or above the normal high water level, within each of the four delineated areas.

Site No.	Date	Material	Size	Amount (yards)
1	2/21/08	Natural river stone	d50 of 40 mm	40.17
2	2/22/08	Natural river stone	d50 of 40 mm	10.66
3	2/20/08 & 2/22/08	Natural river stone	d50 of 15 mm	25.00
4	2/20/08	Natural river stone	d50 of 15 mm	25.28

Section 3.2 of the Plan requires that effectiveness monitoring be conducted within a year of the first gravel introduction. Monitoring results will be submitted to FERC no later than March 1, 2009.

APGI is providing this information to FERC as evidence of its compliance with the FERC-approved Cheoah River Bypassed Reach Gravel Enhancement Plan. Please feel

free to contact me at (704) 422-5622 or marshall.olson@alcoa.com if you have any questions.

Sincerely,

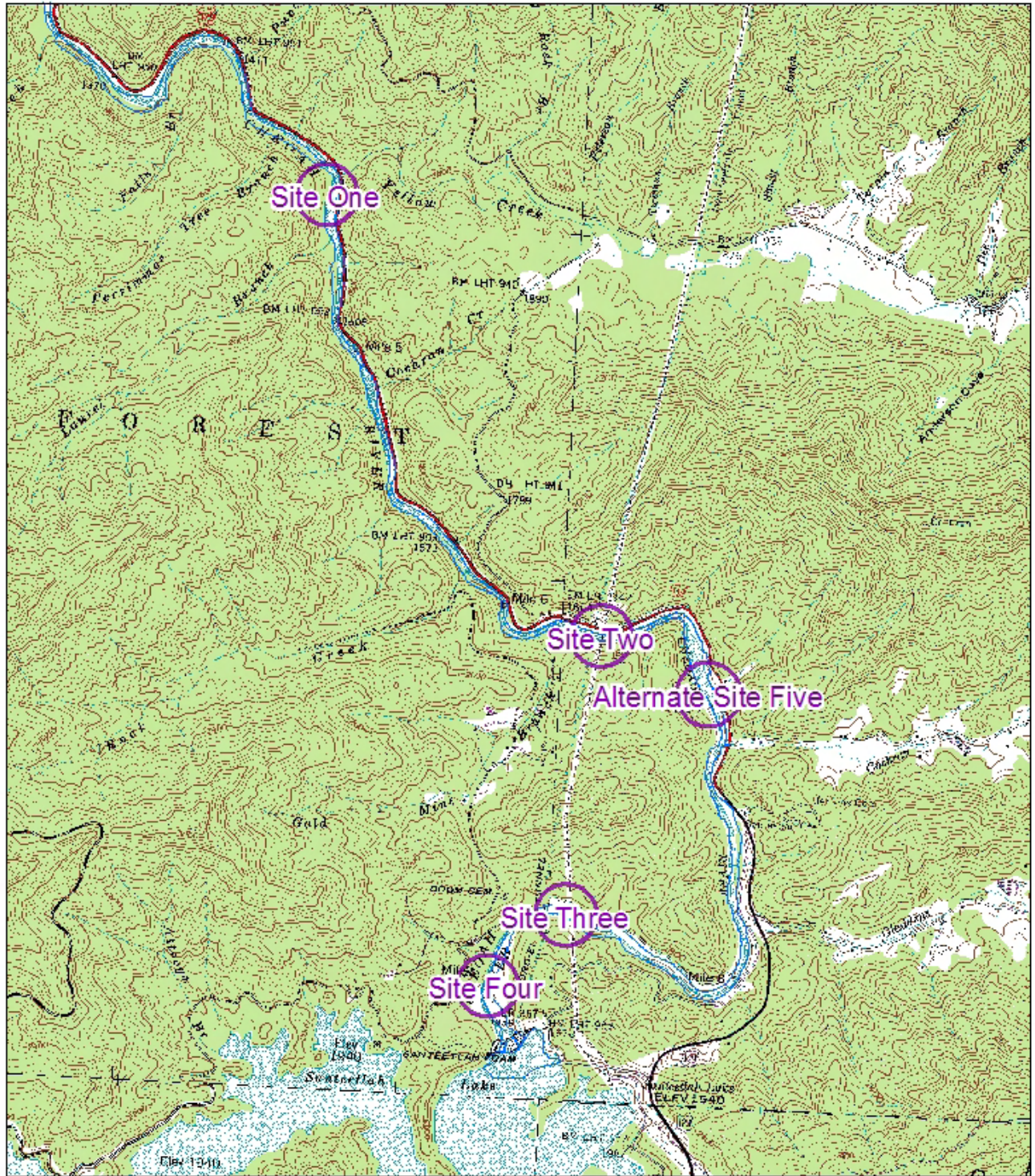
A handwritten signature in cursive script that reads "Marshall L. Olson". The signature is written in black ink on a white background.

Marshall Olson
Environmental and Natural Resources Manager



Attachment

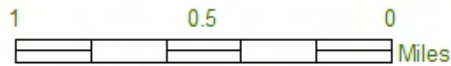
CC: Mark Cantrell, USFWS
Jason Farmer, USFS
Steve Reed, NCDWR
Chris Goudreau, NCWRC

Gravel Sites: Graham County, NC



Legend

-  SiteCircles
-  river_boundary



map by: Mark Cantrell
mark_a_cantrell@fws.gov

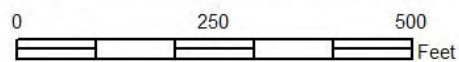
Gravel Sites: Graham County, NC



Legend

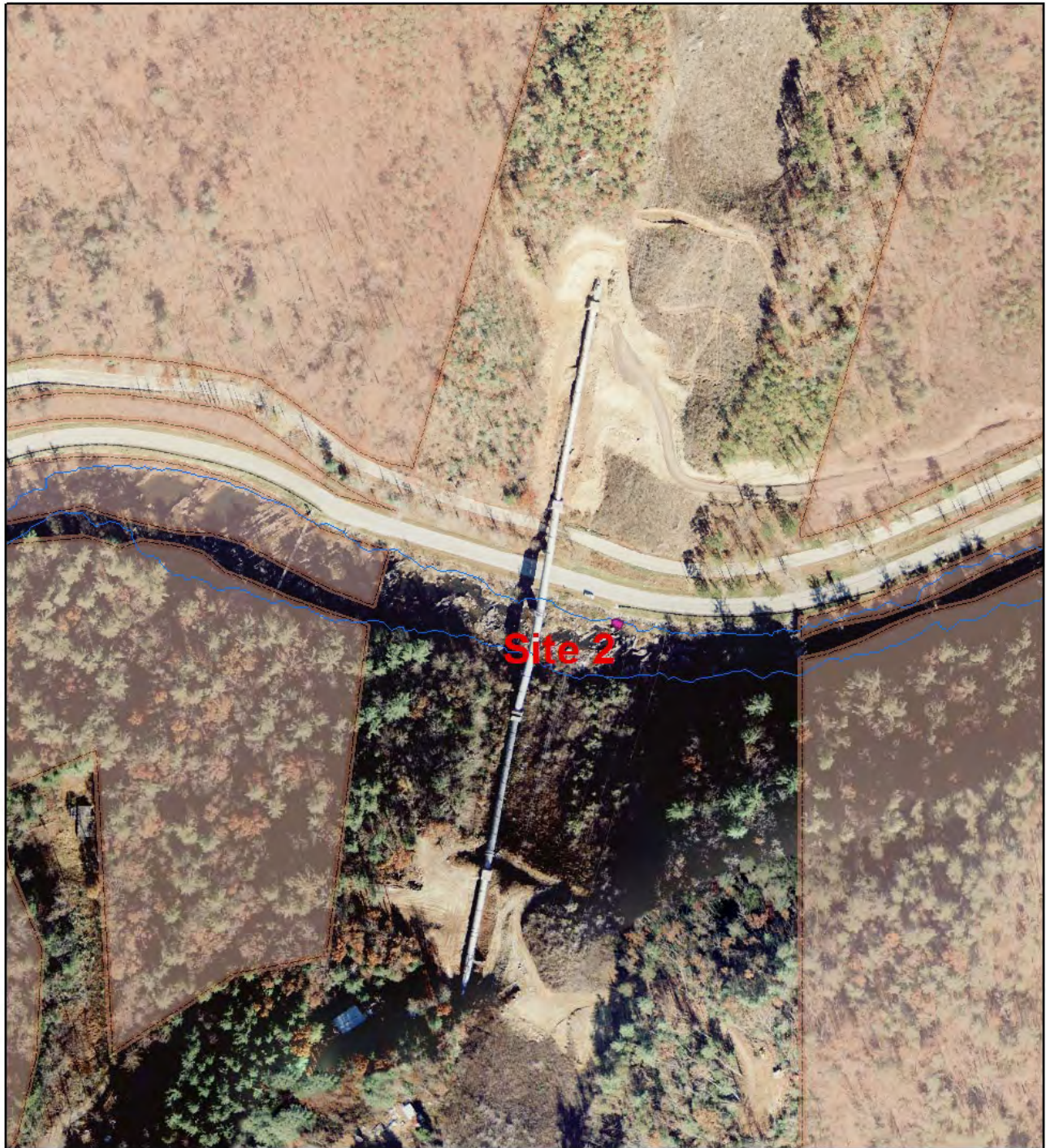
- final 11/07
- river_boundary
- US Forest Service

SiteNum	Particle	Label	Longitude	Latitude
1	40	Site 1	83° 53' 21.25" W	35° 25' 7.43" N
2	40	Site 2	83° 52' 20.96" W	35° 23' 51.43" N
3	15	Site 3	83° 52' 31.46" W	35° 23' 3.72" N
4	15	Site 4	83° 52' 42.83" W	35° 22' 48.54" N
5	15	Site 5	83° 51' 57.01" W	35° 23' 42.43" N



map by: Mark Cantrell
mark_a_cantrell@fws.gov

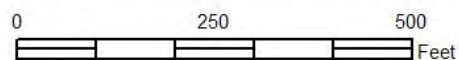
Gravel Sites: Graham County, NC



Legend

- final 11/07
- river_boundary
- US Forest Service

SiteNum	Particle	Label	Longitude	Latitude
1	40	Site 1	83° 53' 21.25" W	35° 25' 7.43" N
2	40	Site 2	83° 52' 20.96" W	35° 23' 51.43" N
3	15	Site 3	83° 52' 31.46" W	35° 23' 3.72" N
4	15	Site 4	83° 52' 42.83" W	35° 22' 48.54" N
5	15	Site 5	83° 51' 57.01" W	35° 23' 42.43" N



map by: Mark Cantrell
mark_a_cantrell@fws.gov

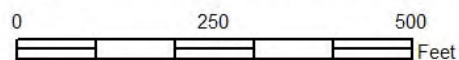
Gravel Sites: Graham County, NC



Legend

- final 11/07
- river_boundary
- US Forest Service

SiteNum	Particle	Label	Longitude	Latitude
1	40	Site 1	83° 53' 21.25" W	35° 25' 7.43" N
2	40	Site 2	83° 52' 20.96" W	35° 23' 51.43" N
3	15	Site 3	83° 52' 31.46" W	35° 23' 3.72" N
4	15	Site 4	83° 52' 42.83" W	35° 22' 48.54" N
5	15	Site 5	83° 51' 57.01" W	35° 23' 42.43" N



map by: Mark Cantrell
mark_a_cantrell@fws.gov

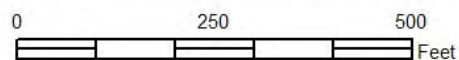
Gravel Sites: Graham County, NC



Legend

- final 11/07
- river_boundary
- US Forest Service

SiteNum	Particle	Label	Longitude	Latitude
1	40	Site 1	83° 53' 21.25" W	35° 25' 7.43" N
2	40	Site 2	83° 52' 20.96" W	35° 23' 51.43" N
3	15	Site 3	83° 52' 31.46" W	35° 23' 3.72" N
4	15	Site 4	83° 52' 42.83" W	35° 22' 48.54" N
5	15	Site 5	83° 51' 57.01" W	35° 23' 42.43" N



map by: Mark Cantrell
mark_a_cantrell@fws.gov

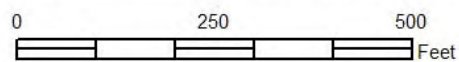
Gravel Sites: Graham County, NC



Legend

- final 11/07
- river_boundary
- US Forest Service

SiteNum	Particle	Label	Longitude	Latitude
1	40	Site 1	83° 53' 21.25" W	35° 25' 7.43" N
2	40	Site 2	83° 52' 20.96" W	35° 23' 51.43" N
3	15	Site 3	83° 52' 31.46" W	35° 23' 3.72" N
4	15	Site 4	83° 52' 42.83" W	35° 22' 48.54" N
5	15	Site 5	83° 51' 57.01" W	35° 23' 42.43" N



map by: Mark Cantrell
 mark_a_cantrell@fws.gov

CERTIFICATE OF SERVICE

I hereby certify that I have this day served the foregoing document upon each person designated on the official service list in this proceeding in accordance with the requirements of Rule 2010 of the Commission's Rules of Practice and Procedure.

Dated at Washington, D.C. this 6th day of March 2008.

/s/ Blen Degef

Blen Degef

Paralegal

Dewey & LeBoeuf LLP

1101 New York Avenue, N.W.

Suite 1100

Washington, DC 20005-4213

202-986-8000